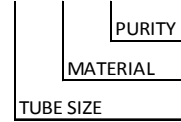
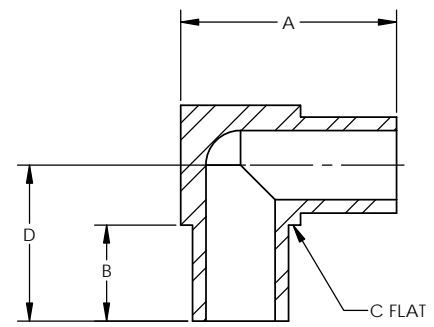


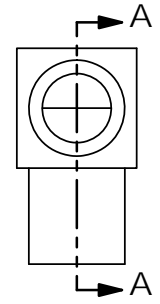
**ORDERING NUMBER**  
5004 - X - X - X



TUBE SIZE	TUBE ID	ORDERING NUMBER	DIMENSIONS			
			[A]	[B]	[C]	[D]
1/8	0.07	5004-2-X-X	0.56	0.25	5/16	0.41
1/4	0.18	5004-4-X-X				
3/8	0.30	5004-6-X-X				
1/2	0.40	5004-8-X-X				



SECTION A-A



- MATERIAL DESIGNATORS**
- S = 316L SST SEMI F20
  - A = 316L
  - B = 316L SST SEMI F20 VIM/VAR
  - N = NICKEL 200
  - M = NICKEL 400
  - H = NICKEL ALLOY C22

- PURITY DESIGNATORS**
- S = STANDARD FINISH
  - H = HIGH PURITY
  - U = ULTRA-HIGH PURITY

NOTES:  
 1. DRAWINGS FOR SPECIFICATION PURPOSES AND ARE FOR REFERENCE ONLY.  
 2. ALL VERSIONS OF THE DRAWING ARE SUPERSEDED BY THIS RELEASE AND SUBJECT TO CHANGE WITHOUT NOTIFICATION.

EFFECTIVE DATE: 2/6/2017			1003 INDUSTRIAL DRIVE SAUK RAPIDS, MN 56379 VOICE: 320-251-0390 FAX: 320-251-5810		
INTERPRET DRAWING PER: ASME Y14.5 - 2009			DESCRIPTION: <b>MINI ELBOW 90 DEG</b>		
THIRD ANGLE PROJECTION			SIZE <b>C</b>	PART NUMBER: <b>5004-X-X-X</b>	SHEET 1 OF 1
DO NOT SCALE DRAWING		SCALE: 4:1			