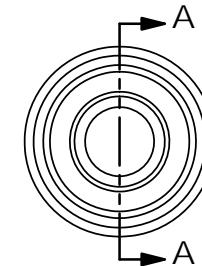
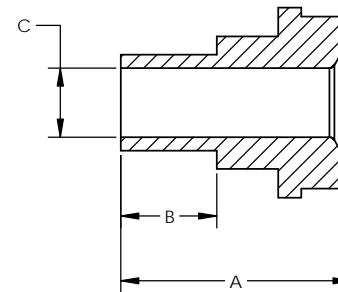


TUBE SIZE	FACE SEAL SIZE	ORDERING NUMBER	DIMENSIONS		
			[A]	[B]	[C]
1/8	1/8	5020-2-1.08-X-X	1.08	0.75	0.07
		5020-2-1.42-X-X	1.42		
1/4	1/4	5020-4-0.60-X-X	0.60	0.25	0.18
		5020-4-1.20-X-X	1.20		
		5020-4-1.10-X-X	1.10	0.75	
		5020-4-1.70-X-X	1.70		
3/8	1/2	5020-6-0.62-X-X	0.62	0.25	0.3
		5020-6-1.29-X-X	1.29		
		5020-6-1.12-X-X	1.12	0.75	
		5020-6-1.79-X-X	1.79		
1/2		5020-8-0.62-X-X	0.62	0.25	0.4
		5020-8-1.29-X-X	1.29		
		5020-8-1.12-X-X	1.12	0.75	
		5020-8-1.79-X-X	1.79		



**MATERIAL DESIGNATORS**

S = 316L SST SEMI F20  
A = 316L  
B = 316L SST SEMI F20 VIM/VAR  
N = NICKEL 200  
M = NICKEL 400  
H = NICKEL ALLOY C22

**PURITY DESIGNATORS**

S = STANDARD FINISH  
H = HIGH PURITY  
U = ULTRA-HIGH PURITY

**NOTES:**  
1. DRAWINGS FOR SPECIFICATION PURPOSES AND ARE FOR REFERENCE ONLY.  
2. ALL VERSIONS OF THE DRAWING ARE SUPERSEDED BY THIS RELEASE AND SUBJECT TO CHANGE WITHOUT NOTIFICATION.

EFFECTIVE DATE: 2/6/2017	<p>1003 INDUSTRIAL DRIVE  SAUK RAPIDS, MN 56379  VOICE: 320-251-0390  FAX: 320-251-5810</p>
INTERPRET DRAWING PER: ASME Y14.5 - 2009	
THIRD ANGLE PROJECTION	
<b>PROPRIETARY AND CONFIDENTIAL</b> THE INFORMATION CONTAINED IN THIS DRAWING IS THE SOLE PROPERTY OF TALON INNOVATIONS, INC. ANY REPRODUCTION IN PART OR AS A WHOLE WITHOUT THE WRITTEN PERMISSION OF TALON INNOVATIONS, INC. IS PROHIBITED.	<b>DESCRIPTION:</b> <b>BUTT WELD GLAND</b>
<b>SIZE:</b> C	<b>PART NUMBER:</b> <b>5020-X-X.XX-X-X</b>
DO NOT SCALE DRAWING	<b>SCALE:</b> 4:1 <b>SHEET 1 OF 1</b>