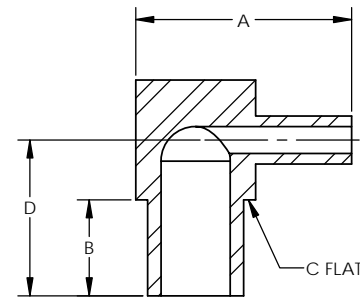
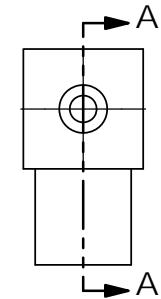


TUBE SIZE 1	TUBE ID 1	TUBE SIZE 2	TUBE ID 2	ORDERING NUMBER	DIMENSIONS			
					[A]	[B]	[C]	[D]
1/4	0.18	1/8	0.07	5029-4-2-X-X	0.56	0.25	5/16	0.41
3/8	0.30	1/4	0.18	5029-6-4-X-X	0.69		7/16	0.47
1/2	0.40			5029-8-4-X-X	0.81		9/16	0.53
		3/8	0.30	5029-8-6-X-X				



SECTION A-A



MATERIAL DESIGNATORS

S = 316L SST SEMI F20
 A = 316L
 B = 316L SST SEMI F20 VIM/VAR
 N = NICKEL 200
 M = NICKEL 400
 H = NICKEL ALLOY C22

PURITY DESIGNATORS

S = STANDARD FINISH
 H = HIGH PURITY
 U = ULTRA-HIGH PURITY

NOTES:
 1. DRAWINGS FOR SPECIFICATION PURPOSES AND ARE FOR REFERENCE ONLY.
 2. ALL VERSIONS OF THE DRAWING ARE SUPERSEDED BY THIS RELEASE AND SUBJECT TO CHANGE WITHOUT NOTIFICATION.

EFFECTIVE DATE: 2/6/2017	 INNOVATION WITH PRECISION 1003 INDUSTRIAL DRIVE SAUK RAPIDS, MN 56379 VOICE: 320-251-0390 FAX: 320-251-5810
INTERPRET DRAWING PER: ASME Y14.5 - 2009	
THIRD ANGLE PROJECTION	
PROPRIETARY AND CONFIDENTIAL THE INFORMATION CONTAINED IN THIS DRAWING IS THE SOLE PROPERTY OF TALON INNOVATIONS, INC. ANY REPRODUCTION IN PART OR AS A WHOLE WITHOUT THE WRITTEN PERMISSION OF TALON INNOVATIONS, INC. IS PROHIBITED.	DESCRIPTION: MINI REDUCING ELBOW
DO NOT SCALE DRAWING	SIZE: C SCALE: 4:1 PART NUMBER: 5029-X-X-X-X SHEET 1 OF 1