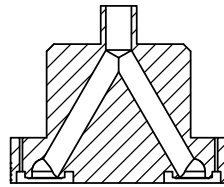
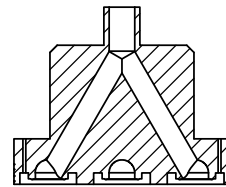


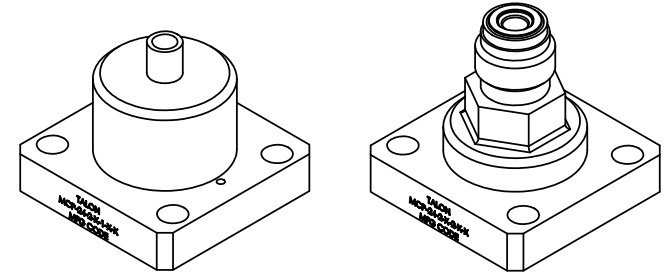
SECTION A-A



SECTION B-B

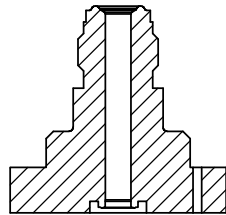
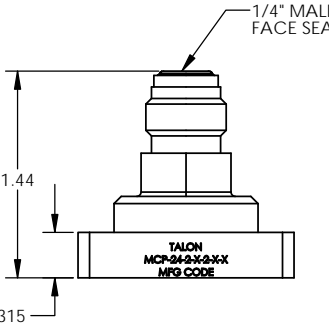
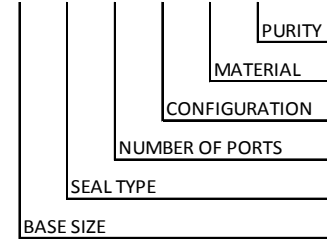


SECTION C-C

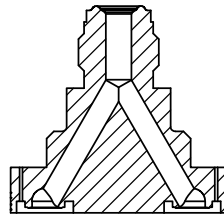


ORDERING NUMBER

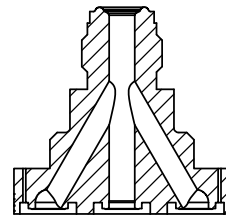
MCP - 24 - 2 - X - X - X - X



SECTION A-A

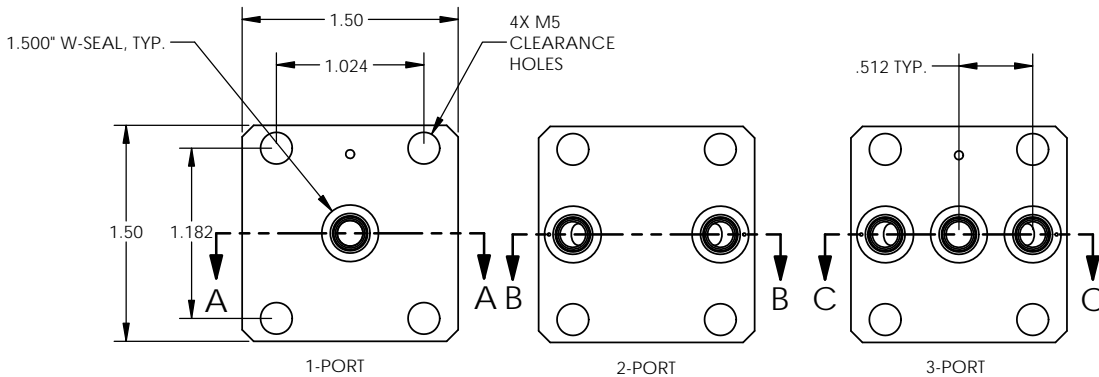


SECTION B-B



SECTION C-C

BASE SIZE	SEAL TYPE	NUMBER OF PORTS	CONFIGURATION	ORDERING NUMBER
1.500"	W-SEAL	1-PORT	1/4" TUBE STUB	MCP-24-2-1-1-X-X
			1/4" MALE FACE SEAL	MCP-24-2-1-2-X-X
		2-PORTS	1/4" TUBE STUB	MCP-24-2-2-1-X-X
			1/4" MALE FACE SEAL	MCP-24-2-2-2-X-X
		3-PORTS	1/4" TUBE STUB	MCP-24-2-3-1-X-X
			1/4" MALE FACE SEAL	MCP-24-2-3-2-X-X



MATERIAL DESIGNATORS

- S = 316L SST SEMI F20
- A = 316L
- B = 316L SST SEMI F20 VIM/VAR
- N = NICKEL 200
- M = NICKEL 400
- H = NICKEL ALLOY C22

PURITY DESIGNATORS

- S = STANDARD FINISH
- H = HIGH PURITY
- U = ULTRA-HIGH PURITY

NOTES:
 1. DRAWINGS FOR SPECIFICATION PURPOSES AND ARE FOR REFERENCE ONLY.
 2. ALL VERSIONS OF THE DRAWING ARE SUPERSEDED BY THIS RELEASE AND SUBJECT TO CHANGE WITHOUT NOTIFICATION.

EFFECTIVE DATE: 2/6/2017		1003 INDUSTRIAL DRIVE SAUK RAPIDS, MN 56379 VOICE: 320-251-0390 FAX: 320-251-5810
INTERPRET DRAWING PER: ASME Y14.5 - 2009		
THIRD ANGLE PROJECTION:		
PROPRIETARY AND CONFIDENTIAL THE INFORMATION CONTAINED IN THIS DRAWING IS THE SOLE PROPERTY OF TALON INNOVATIONS, INC. ANY REPRODUCTION IN PART OR AS A WHOLE WITHOUT THE WRITTEN PERMISSION OF TALON INNOVATIONS, INC. IS PROHIBITED.	DESCRIPTION: MODULAR COMPONENT PORT 1.500" W-SEAL	PART NUMBER: MCP-24-2-X-X-X-X
DO NOT SCALE DRAWING	SCALE: 3:2	SHEET 1 OF 1