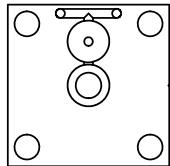


3-PORT, CENTER

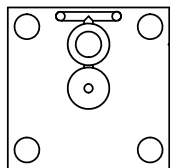
TALON
MFR-18-1-2-1-X-X
QUALITY INNOVATIONS WITH PRECISION



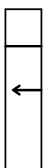
2-PORT, SIDE



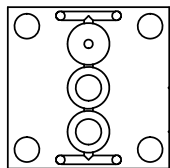
TALON
MFR-18-1-2-2-X-X
QUALITY INNOVATIONS WITH PRECISION



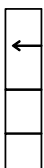
2-PORT, CENTER



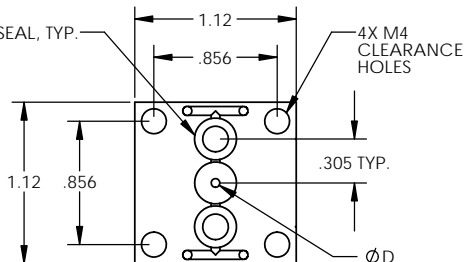
TALON
MFR-18-1-3-1-X-X
QUALITY INNOVATIONS WITH PRECISION



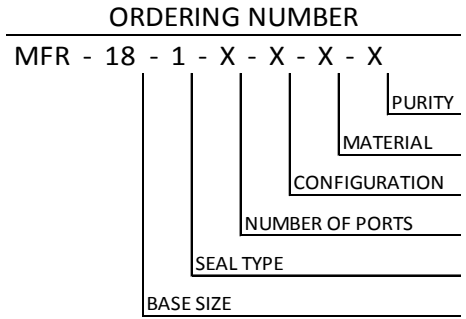
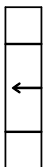
3-PORT, SIDE



TALON
MFR-18-1-3-2-X-X
QUALITY INNOVATIONS WITH PRECISION



3-PORT, CENTER



BASE SIZE	SEAL TYPE	NUMBER OF PORTS	CONFIGURATION	ORDERING NUMBER
1.125"	C-SEAL	2-PORTS	SIDE	MFR-18-1-2-1-X-X
			CENTER	MFR-18-1-2-2-X-X
		3-PORTS	SIDE	MFR-18-1-3-1-X-X
			CENTER	MFR-18-1-3-2-X-X

- MATERIAL DESIGNATORS**
- S = 316L SST SEMI F20
 - A = 316L
 - B = 316L SST SEMI F20 VIM/VAR
 - N = NICKEL 200
 - M = NICKEL 400
 - H = NICKEL ALLOY C22

- PURITY DESIGNATORS**
- S = STANDARD FINISH
 - H = HIGH PURITY
 - U = ULTRA-HIGH PURITY

*WHEN ORDERING, MUST SPECIFY ORIFICE DIAMETER [D] OR THE FOLLOWING:
GAS TYPE, FLOW RATE, INLET PRESSURE, AND OUTLET PRESSURE.

EFFECTIVE DATE: 2/6/2017	<p>1003 INDUSTRIAL DRIVE SAUK RAPIDS, MN 56379 VOICE: 320-251-0390 FAX: 320-251-5810</p>		
INTERPRET DRAWING PER: ASME Y14.5 - 2009			
THIRD ANGLE PROJECTION	DESCRIPTION: MODULAR FLOW RESTRICTOR 1.125" C-SEAL		
PROPRIETARY AND CONFIDENTIAL THE INFORMATION CONTAINED IN THIS DRAWING IS THE SOLE PROPERTY OF TALON INNOVATIONS, INC. ANY REPRODUCTION IN PART OR AS A WHOLE WITHOUT THE WRITTEN PERMISSION OF TALON INNOVATIONS, INC. IS PROHIBITED.	<table border="1"> <tr> <td>SIZE C</td> <td>PART NUMBER: MFR-18-1-X-X-X-X</td> </tr> </table>	SIZE C	PART NUMBER: MFR-18-1-X-X-X-X
SIZE C	PART NUMBER: MFR-18-1-X-X-X-X		
DO NOT SCALE DRAWING	SCALE: 3:2 SHEET 1 OF 1		

NOTES:
1. DRAWINGS FOR SPECIFICATION PURPOSES AND ARE FOR REFERENCE ONLY.
2. ALL VERSIONS OF THE DRAWING ARE SUPERSEDED BY THIS RELEASE AND SUBJECT TO CHANGE WITHOUT NOTIFICATION.